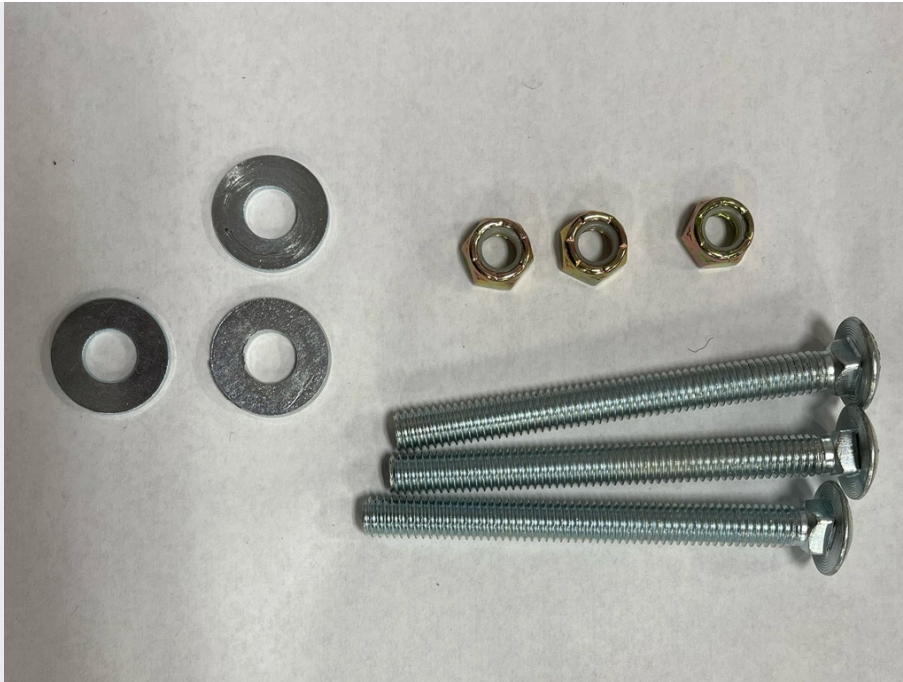


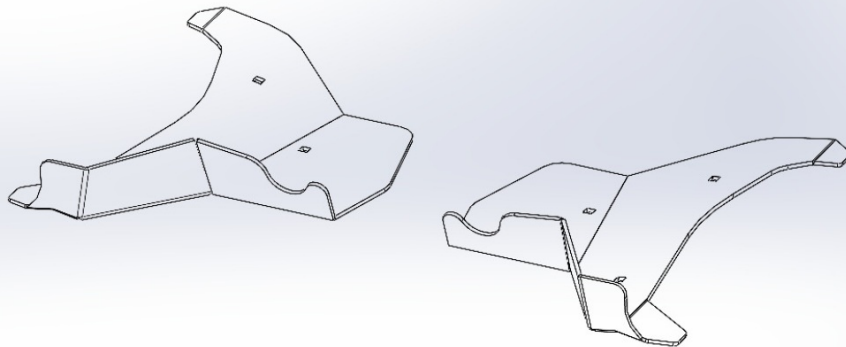


1



Included Hardware: (6) 3" Carriage Bolts, (6) 1/2" Washers, (6) 1/4" Nylock Nuts.

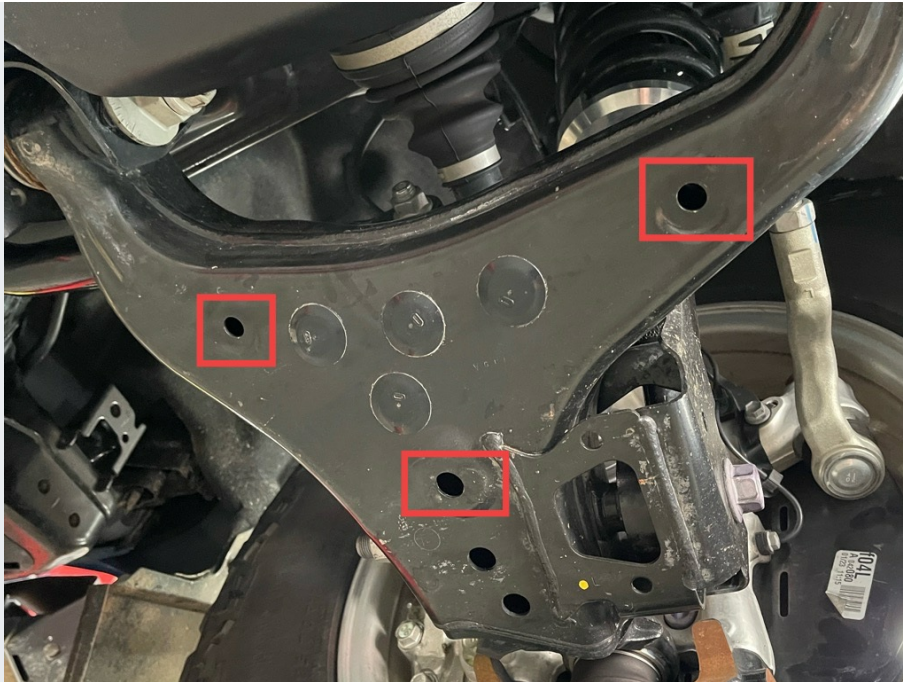
2



Included Part(s): (2) Lower Control Arm Skids.



3



The (3) holes shown above will be used to mount the lower control arm skid to the lower control arm.

4



With the skid lined up to each of the (3) holes, insert a carriage bolt through the bottom of the skid up through the control arm, with a washer and nylock nut on top. Leave everything loose.



5



With all of your bolts started, use a wrench to tighten them all down into place. Repeat this same process on the other control arm to complete your install.

6

**Thank you for supporting
American-made. We hope you
enjoy your new product!**

If you have any questions or concerns
please reach out to us.

info@jcroffroad.com
info@victory4x4.com
info@squatch-proof.com
info@fatamericanmfg.com
269-353-1184



**SQUATCH
PROOF**

**FAT
AMERICAN MFG.**