

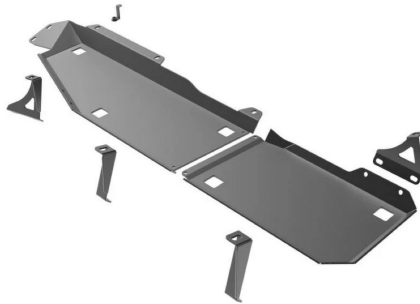


INSTALL DOC - JKSD-TNK-4D

Feedback?

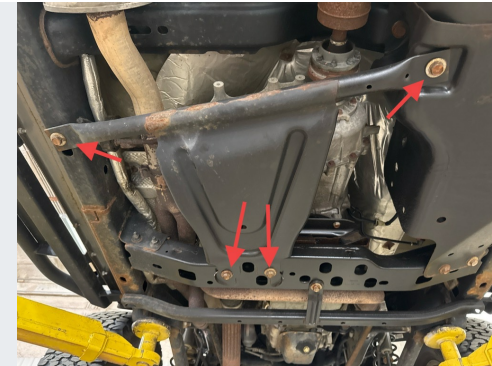


1



NOTE: This installation is more easily performed with the fuel level closer to empty.

2



Remove (4) bolts retaining the transfer case skid using an 18mm socket

3



Remove front (2) bolts retaining factory tank skid to transmission crossmember.

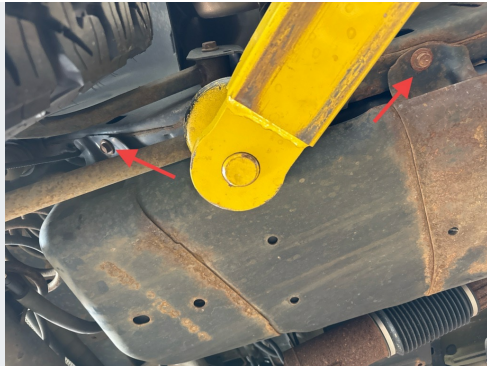
4



Remove the front and middle fasteners on the inside of the factory tank skid.



5



Remove the middle and rear fasteners on the outside of the tank skid.

6



With the last two fasteners retaining the factory tank skid, support the entire assembly with a jack positioned near the middle.

7



Remove the final fasteners: (1) near the front of the skid on the outside, into the frame rail.

8



As well as (1) in the inside of the assembly at rear of the tank skid.



9



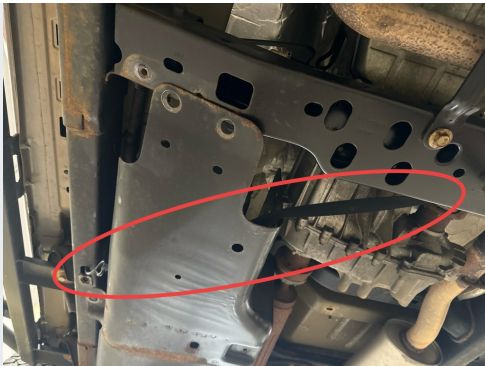
Carefully lower skid and tank assembly just enough to allow it be moved freely. Only a couple of inches is necessary.

10



NOTE: Use caution while lowering and maneuvering not to impose undue tension or other forces onto fuel lines, filler neck, or EVAP lines.

11



Slip a ratchet strap between the fuel tank and the factory tank skid, connecting to the frame and a point opposite so that the strap may be tightened to suspend the tank.

12



Use a second ratchet strap and repeat the same process to suspend the rear of the tank.



13 **NOTE:** Threading the second strap through is tricky and may require a second set of hands. The jack supporting the skid and tank assembly may need to be lowered significantly more, so check the fuel lines, filler neck, and EVAP lines often to ensure they are not damaged.



With the tank fully supported, lower the jack and factory tank skid completely out of the way and remove.



Reposition and adjust the straps supporting the tank. With the assistance if the jack tighten them up slightly to help draw the tank back into the original position.





17



Loosely pre-install the bracket #1 onto the rear, outside corner of the rear skid half using (2) 1/2" x 1" button head bolts and 1/2" flange nuts as shown.

18



Using the jack, lift the rear portion of the JCR tank skid into place with the jogged flange oriented to the front of the vehicle. Support the tank with the skid and remove the ratchet strap.

19



Attach the bracket to the frame in the factory rear outside mounting location using an M12 x 1.5mm x 30mm and flat washer. Start but do not tighten.

20

NOTE: All brackets will remain loose until full assembly is installed and positioned correctly.



INSTALL DOC - JKSD-TNK-4D

Feedback?



21



Attach bracket #2 to the inside rear mounting hole on the skid with a 1/2" x 1" button head and flange nut, and attach the bracket to the factory skid mounting location using another M12 x 1.5mm x 40mm hex head bolt and flat washer.

22



Lower the jack away from the skid, allowing it to support the rear of the fuel tank.

23



Raise the front skid half into place, supporting the tank, and remove the front ratchet strap.

24



Bolt the two skid halves together using (2) 3/8"-16 x 3/4" black button head screws and 3/8"-16 flange lock nuts. Tighten these fully.



INSTALL DOC - JKSD-TNK-4D

Feedback?



25



Attach bracket #3 to the middle of the front skid half on the inside mounting hole with a 1/2" x 1" button head screw and flange nut, and to the factory skid mounting point on the crossmember above with another M12 screw and flat washer.

26



Use (2) M12 screws and flat washers to loosely attach the outside of the skid to the factory locations on the frame.

27



Attach bracket #4 to the skid using (2) 1/2" x 1" button head screws and nuts, and to the factory mount on the crossmember advice with another M12 screw and flat washer.

28



Use the remaining (2) M12 screws to attach the front of the skid to the transmission crossmember.



INSTALL DOC - JKSD-TNK-4D

Feedback?



29



Verify that the entire assembly is situated properly and begin tightening all of the remaining loose hardware.

30



With the skid tight, locate the remaining mounting slot in the front of the skid.

31



Using the shout as a guide, Mark the center and drill it to accept a 1/2" bolt

32



Insert the included nut-tab into the hole in the frame above the hole that was just drilled.



INSTALL DOC - JKSD-TNK-4D

Feedback?



33



34

**Thank you for supporting
American-made. We hope you
enjoy your new product!**

If you have any questions or concerns
please reach out to us.

info@jcroffroad.com
info@victory4x4.com
info@squatch-proof.com
info@fatamericanmfg.com
269-353-1184



Thread the 1/2" x 1-1/2" hex head bolt into the nut tab and tighten it down.