



Assembly - FAM 36 Bin Rolling Rack Assembly

Feedback?



1



2

This kit includes:

1x Left Rack Upright

1x Right Rack Upright

6x Bin Shelves

2x Logo Plates

4x 3" Locking Swivel Casters

72x 5/16x5/8" Button Head Socket Cap Screws

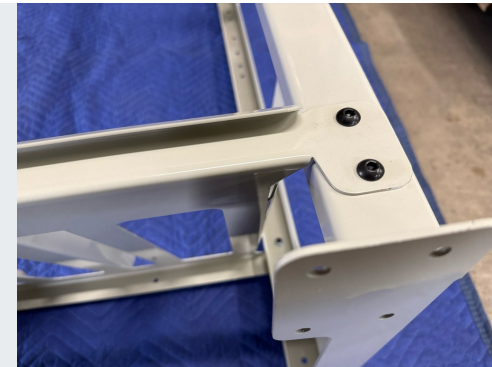
72x 5/16 Flange Lock Nuts.

3



Begin assembly by standing up one rack upright and sliding a shelf onto it.

4



Bolt shelf to rack, leaving screws just slightly snug.



Assembly - FAM 36 Bin Rolling Rack Assembly

Feedback?

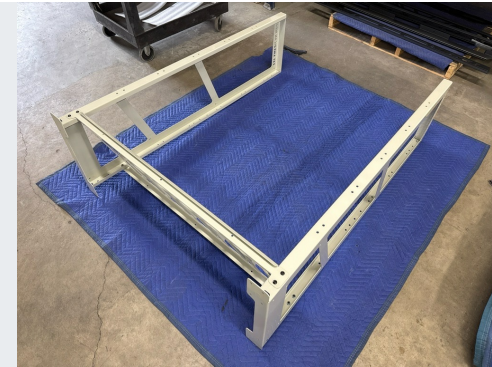


5



Ensure that the front shelf flange is aligned with the front of the rack. The angle of the shelf should be parallel to the angle of the cutouts in the rack upright. Internal forced flanges should face up.

6



Install opposite side rack upright into existing shelf/upright assembly, install bolts and nuts, leaving them slightly snug.

7



Install second shelf by angling it into the rack assembly.

8



Install hardware at all 4x attachment points on shelf and slightly snug.

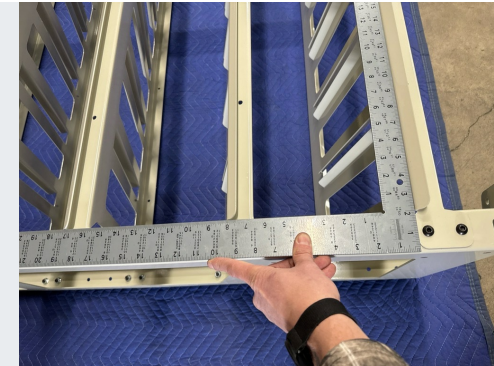


9



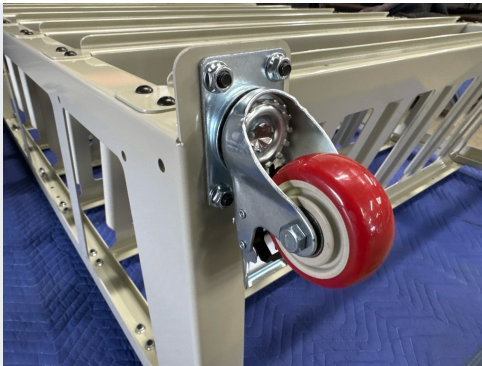
Repeat steps used to install second shelf on the remaining 4x shelves.

10



Use a framing square to check that the rack is square at each corner. Once this is verified. Beginning tightening all of the fasteners on the front of the rack.

11



Install all 4 swivel casters onto mounting pads located on the bottoms of the rack uprights.

12



Once casters are all tight, lock them to assist in standing the entire rack assembly up.

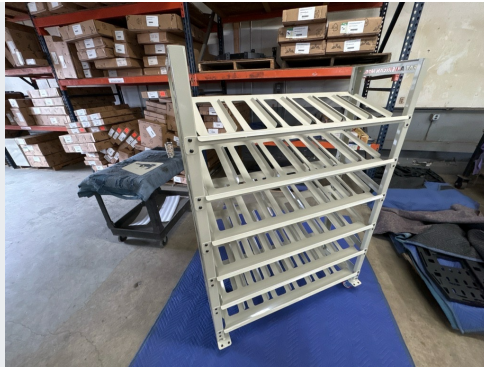


Assembly - FAM 36 Bin Rolling Rack Assembly

Feedback?



13



With the rack standing vertical, verify that it is still square and tighten the remaining fasteners on the back of the rack.

14



Install both logo plates with the remaining hardware.

15

**Thank you for supporting
American-made. We hope you
enjoy your new product!**

If you have any questions or concerns
please reach out to us.

info@jcroffroad.com
info@victory4x4.com
info@squatch-proof.com
info@fatamericanmfg.com
269-353-1184



Your 36 Bin Rolling Rack is now complete!