

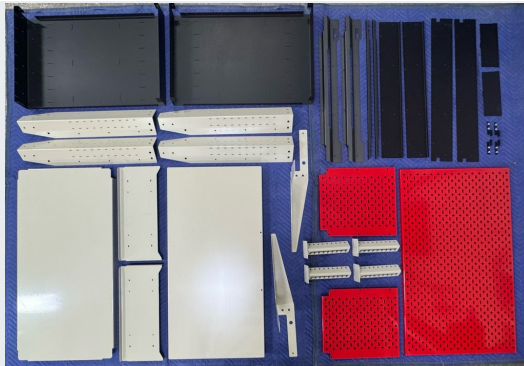


## Assembly - FAM 20" x 40" Shop Table FTB01-2040

Feedback?



1



This kit includes:

1x Table Top

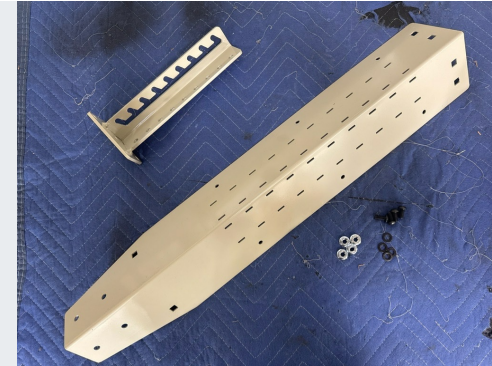
1x Lower Shelf

4x Legs

4x Feet

2x Drawer Housings

2



Connect the foot to the leg with four 5/16 black screws, washers, and flange lock nuts for each assembly.

3



Repeat for all four legs.

4



Invert the table top and attach the leg assemblies using the 3/8 carriage bolts, flange lock nuts and square-neck washers. The washers should be installed on the nut side.



## Assembly - FAM 20" x 40" Shop Table FTB01-2040

Feedback?



5



Snug these fasteners but do not tighten them all the way.

6



Roll the table onto its side to assist with the installation of the lower shelf.

7



Attach the shelf to the legs at the lower mounting hole location using 8 more 3/8 carriage bolts, nuts, and square neck washers.

8



Secure casters with 5/16 x 5/8" button head screws, washers, and nuts; use 1/4 x 3/8" button head screws and washers for attaching feet.



## Assembly - FAM 20" x 40" Shop Table FTB01-2040

Feedback?



9



Set the table upright on a flat surface and ensure it is square. Then finish tightening the 3/8" nuts onto the carriage bolts.

10



Install drawer mounts on each side using 4x 1/4" x 1/2" black button head screws and flange nuts per mount.

11



Install the drawer backyard panel onto the main drawer housing with 6x 1/4" x 1/2" button head screws, washers, and flange nuts.

12



The arrows indicate the front of the drawer



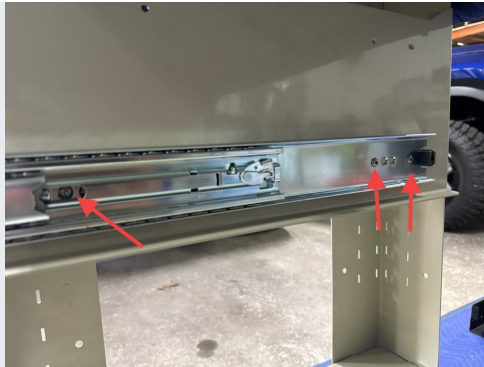


## Assembly - FAM 20" x 40" Shop Table FTB01-2040

Feedback?



13



Install drawer slides into drawer mounts using 3x #10 x 1/2" button head screws and flange nuts. Slides will need to be partial extended to install the screw closest to the front of the table

14



Slides indicate which side they should be installed on. Ensure that when installed, the latch lever actuates down to release the slide lock.

15



Install the remaining slides on the appropriate sides.

16



With the to pair of slides fully extended, install top drawer onto the slides using 3x #10 x 1/2" button head screws and flange nuts per side. Ensure that the screws run from the outside in.





## Assembly - FAM 20" x 40" Shop Table FTB01-2040

Feedback?



17



Set the drawer front onto the latches but do not install hardware yet.

18



Pre-assemble the latch handle with 1x 1/4" x 3/8" black button head screws per side. Leave these slightly loose.

19



Slide handle assembly into latches with the "PRESS" cutout facing up, install but do not fully tighten the second 1/4" x 3/8" Black button head screw on each side, and center the assembly between the latches.

20



Using a pair of slip-joint pliers, grab and pull the latch assembly outward while squeezing to preload the handle onto the slide-lock release levers. Tighten both screws fully on each side and verify the the handle assembly actuates both releases simultaneously.



## Assembly - FAM 20" x 40" Shop Table FTB01-2040

Feedback?



21



Install handle cover over handle using 6x 1/4" x 1/2" black button head screws, passing through the handle cover as well add the drawer front at the locations shown. Thread on flange nuts and tighten fully

22



Repeat this process for the second drawer. Verify that drawers move smoothly without binding and that latches release and catch properly.

23



With both drawers installed, return to the drawer mounts and tighten all of the previously installed hardware.

24



Ensure that the slides are installed so that the drawers will pull out opposite the two small holes on one side of the table top.



## Assembly - FAM 20" x 40" Shop Table FTB01-2040

Feedback?



25



If you are installing the back wall, remove these three fasteners on each side of the back of the table assembly.

26



Locate and install the back wall mounting brackets as shown.

27



Fasten the mounting bracket re-using the previously removed 3/8" carriage bolts, square-neck washers, and flange nuts, as well as the 1/4" x 1/2" black button head screw, washer, and nut at the bottom of the bracket.

28



Use an additional 3/8" carriage bolt, square neck washer, and flange nut to secure the side of the mounting bracket to the square hole in the end of the table.





29



Repeat this process to install the mounting bracket in the opposite side.

30



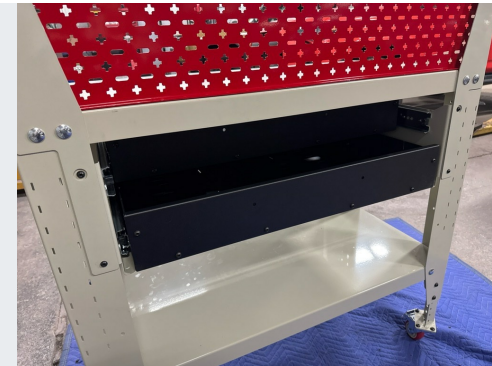
Insert Stack Rack back wall panel into brackets.

31



Attach each side of the Stack Rack panel to the mounting brackets using 3x 1/4" x 1/2" black button head screws, washers, and flange nuts.

32



Slide the top drawer out slightly to have access to the underside of the table top on the back side of the table.

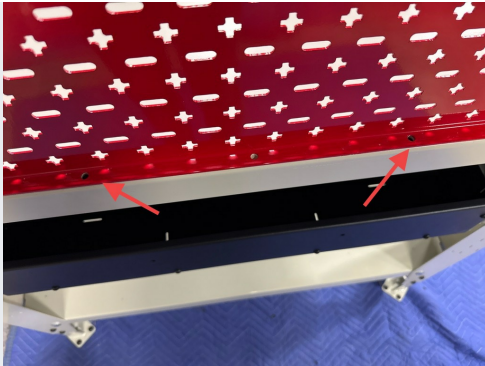


## Assembly - FAM 20" x 40" Shop Table FTB01-2040

Feedback?

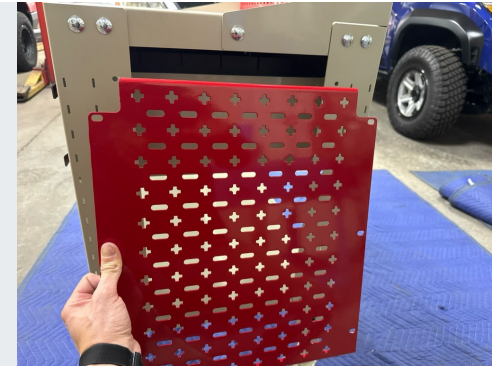


33



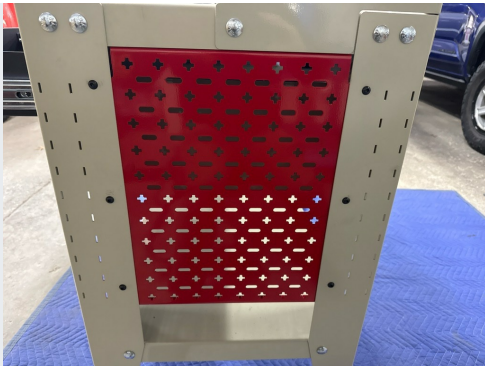
Fasten the panel to the table top through the two indicated holes using 2x 1/4" x 1/2" black button head screws, washers, and flange nuts.

34



Begin installing the side Stack Rack panels with the panel rotated so the notches are on top. "Weave" the panel in between the legs so that it is on the inside of the table.

35



Attach panel using 6x 1/4" x 1/2" Black button head screws, washers, and nuts.

36



You may find access to the top mounting screws and nuts easier with the top drawer extended out all the way.



## Assembly - FAM 20" x 40" Shop Table FTB01-2040

Feedback?



37

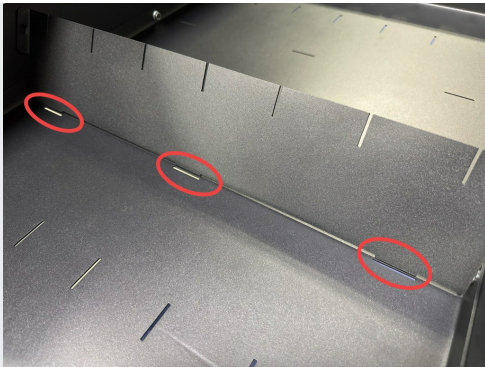


Double check that all fasteners are tight, and that the drawers function properly

38

To install the dividers, use these holes on the front and back of the drawer assembly. There are a matching pair on each side of the drawer to allow for configurability.

39



Index the divider tabs into the slots on the drawer bottom.

40



Use 2x 1/4" x 1/2" black button head screws, washers, and flange nuts to finish the divider installation.



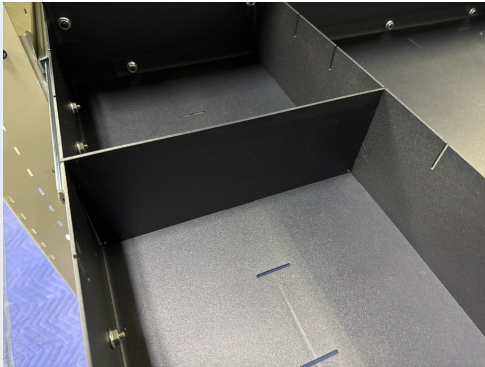


## Assembly - FAM 20" x 40" Shop Table FTB01-2040

Feedback?



41



The horizontal dividers may be slid into the slots in the drawer side and bottom and then matching slots in the vertical divider. These are held in place by friction.

42

**Thank you for supporting  
American-made. We hope you  
enjoy your new product!**

If you have any questions or concerns  
please reach out to us.

info@jcroffroad.com  
info@victory4x4.com  
info@squatch-proof.com  
info@fatamericanmfg.com  
269-353-1184

