



INSTALL DOC - 250-Series Land Cruiser Front Blitz

Feedback?



1

**Thank you for supporting
American-made. We hope you
enjoy your new product!**

If you have any questions or concerns
please reach out to us.

info@jcroffroad.com
info@victory4x4.com
info@squatch-proof.com
info@fatamericanmfg.com
269-353-1184



2



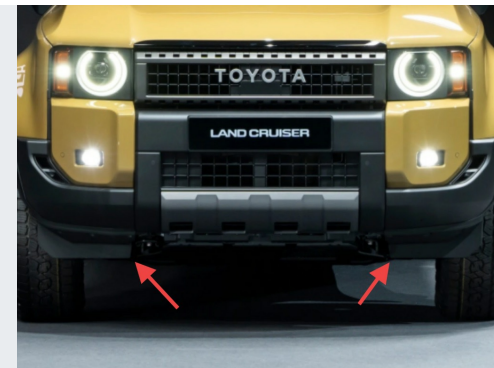
Begin disassembly by releasing (8) push retainers and removing the upper radiator/hood latch shroud.

3



Remove the (3) grill mounting screws and set aside.

4



Remove front lower valance, if equipped. This will not be reinstalled



INSTALL DOC - 250-Series Land Cruiser Front Blitz

Feedback?

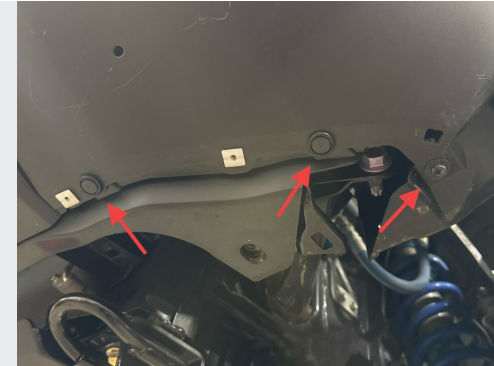


5



Remove (4) lower fascia retaining screws. There are (2) on each side.

6



Remove (2) clips and (1) screw retaining the bottom of each of the lower fascia corner panels.

7



Remove (1) screw and (3) clips retaining inner fender to bumper fascia and lower portion of fender flare.

8



Remove (3) clips retaining the upper portion of the fender flare.

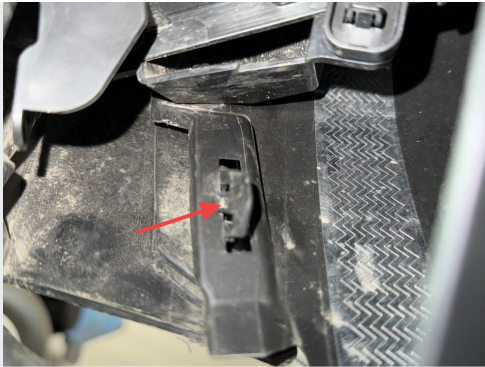


INSTALL DOC - 250-Series Land Cruiser Front Blitz

Feedback?



9



Depress center finger to release tab retainer on the inside bottom of the flare on each side.

10



Gently pull flare away from body, careful unsnapping retainers in fascia and fender.

11



Remove (2) remaining clips and (1) screw beneath the flare.

12



Disconnect tan fascia harness connector on driver side.



INSTALL DOC - 250-Series Land Cruiser Front Blitz

Feedback?



13



Disconnect black and gray bail connector on drivers side.

14



To remove fascia, use the vents in each side to carefully detach internal retainers and release the fascia one side at a time.

15

NOTE: This step is easier and safer to perform with a second person to ensure the fascia does not accidentally get dropped.

16



Remove the (4) clips retaining the bottom of the center fascia filler panel.



17



Remove the (2) Phillips screws in the center of the filler panel.

18



Remove the (2) white clips retaining the filler panel (1 on each side)

19



Depress the tab to release the retainer on both outer lower corners of the filler panel.

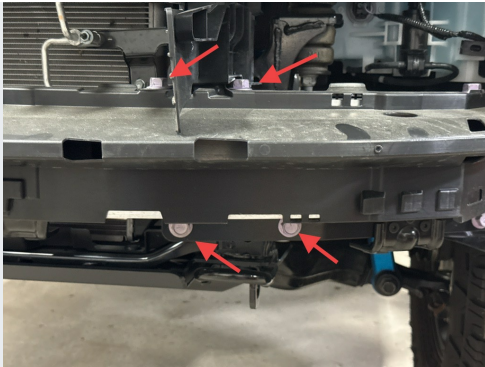
20



Release the tabs retaining the top filler panel along the top edge. There are (6)



21



Remove the (8) bolts retaining the crash support to the frame. There are (4) on each side.

22



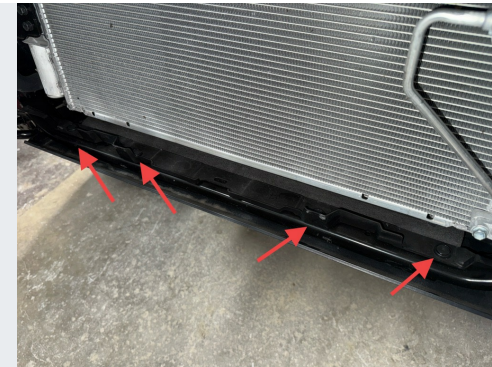
Remove the clip on each side fastening the side radiator shrouds to the crash support on both sides.

23



Remove crash support assembly and set aside.

24



Remove the (4) clips retaining the lower radiator splash guard and discard.



INSTALL DOC - 250-Series Land Cruiser Front Blitz

Feedback?



25

The cut can be laid out and performed with the fascia partially reinstalled on the vehicle, however it is much easier to do this work with it uninstalled and oriented flat.

26



Using the channels the filler panel fit into previously as a guide, mark the fascia with a paint pen or similar.

27



Mark both sides of the center opening as shown in the image.

28



Mark the center as shown, connecting both sides and creating a clean 90 degree corner.



INSTALL DOC - 250-Series Land Cruiser Front Blitz

Feedback?



29



Prepare for the cut: using a stable surface such as a small work table or sturdy shop cart, flip the fascia over so that the outside is facing up.

30



To make the cut you may use a small reciprocating saw or a cut-off tool with an abrasive disc. Always wear safety glasses and protective equipment when performing these operations.

31

A large diameter abrasive disc will make executing a smooth, straight cut much easier, especially along larger straight sections such as the center of the fascia

32



The cut fascia should look like this when completed. Clean up the cut edges with a flat disc or similar tool.



INSTALL DOC - 250-Series Land Cruiser Front Blitz

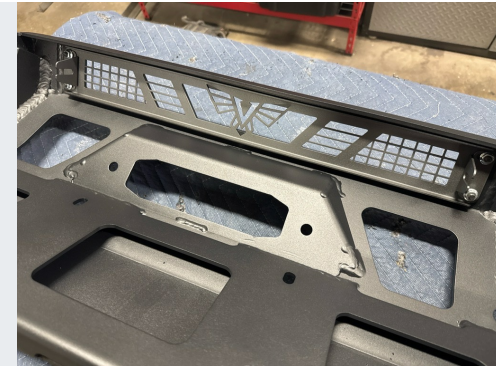
Feedback?



33

It is advisable to err on the side of cutting less and trimming where additional clearance is needed once the fascia has been test fit

34



Install lightbar bezel and lightbar mounting brackets to the inside of the bumper using (4) 1/4" x 3/4" black button head screws, finish washers, and flange lock nuts.

35



Install lightbar and adjust brackets so that the bar is centered in the opening. Tighten all of the mounting hardware for the bezel, brackets, and lightbar

36



Install fairlead or fairlead block-off plate and tighten hardware



INSTALL DOC - 250-Series Land Cruiser Front Blitz

Feedback?



37



Install winch using manufacturer supplied hardware. If you are unsure of your winch will fit, please reach out to customer support.

38



Disconnect the wire connector from the horn, and pop the plastic wire retainer out of its bracket. Remove the retaining bolt and remove the horn.

39



Flatten out the indexing tab on the horn mounting bracket.

40



Thread the harness up through the facts reinforcement structure and the intercooler shroud. Snap the wire retainer into the unused slot on the latch mount support.

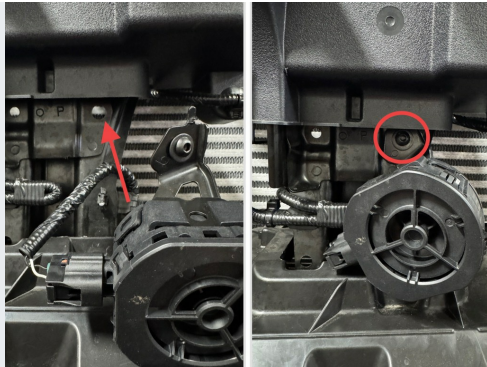


INSTALL DOC - 250-Series Land Cruiser Front Blitz

Feedback?



41



Attach the horn bracket to the latch support brace using a preexisting hole as shown. Use a 1/4" x 3/4" black button head screw, black 1/4" USS washer, and flange lock nut to fasten the bracket.

42



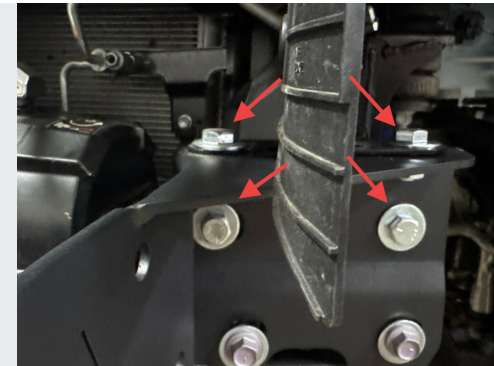
Install bumper into factory mounting flanges on the frame.

43



Attach the bumper to the mounts by reusing (2) of the original crash bar bolts per side, with the addition of a 1/2" USS washer on each bolt.

44



Using (1) 1/2" x 1" hex head screw, 1/2" USS washer, and 1/2" flange nut per mounting slot, attach the bumper to the remaining (4) mounting points on each side.



45



To prepare to test fit the fascia, center the bumper and tighten down just 2 mounting bolts per side.

46



Temporarily reinstall the fascia assembly and take note of any areas that need to be trimmed or corrected, as well as any adjustments that the bumper may require.

47



Once the the trimming is satisfactory and the fit of the bumper is even and correct, proceed in fully tightening all bumper mounting hardware on each side.

48



Reinstall front fascia assembly and snap the panels beneath the headlights back in place.

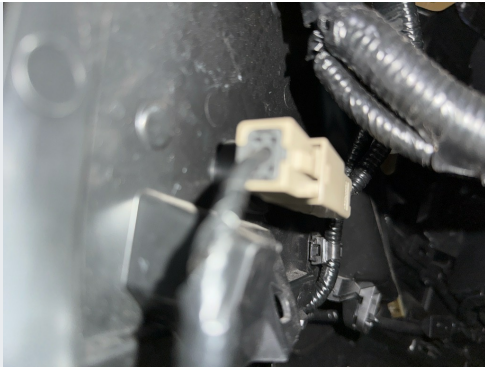


INSTALL DOC - 250-Series Land Cruiser Front Blitz

Feedback?



49



Reconnect wire harness connectors on both sides of the fascia assembly.

50



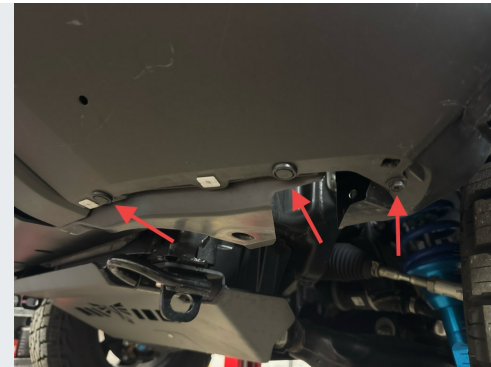
Reinstall and tighten upper grill mounting screws.

51



Reinstall upper radiator/hood latch cover.

52



Reattach lower corner fascia panel to inner fender liner with (2) plastic push retainers and (1) coarse thread screw.



INSTALL DOC - 250-Series Land Cruiser Front Blitz

Feedback?



53



Continue reattaching the inner feeder to the lower fascia filler panel with another (2) plastic push retainers and (1) coarse thread screw.

54



Scalp flare back into place and ensure it is properly seated.

55



Fasten inside of flare to inner fender with (1) coarse thread screw and (3) plastic push retainers as shown.

56



Reattach upper portion of fender flare with (3) plastic push retainers at indicated locations.

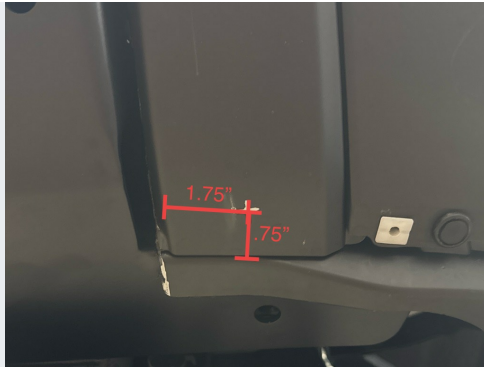


INSTALL DOC - 250-Series Land Cruiser Front Blitz

Feedback?



57



Mark the center grill surround pieces as shown in the diagram. Drill through the outer and inner layers of plastic with a 9/32" drill.

58



Install a plastic push retainer to fasten the outer plastic to the inner structure. Do this for both sides.