



Install Doc - VT4FB-VIP 24+ Tacoma Viper Wings

Feedback?

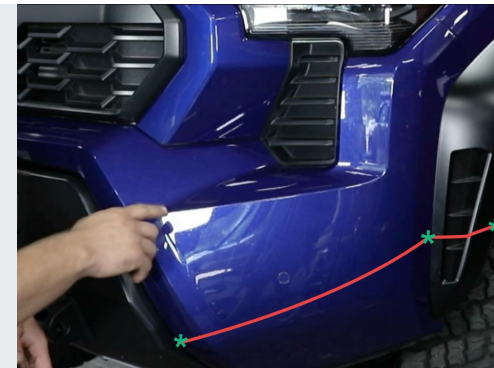


1



This product requires the prior installation of the Victory 4x4 2024+ Tacoma Front Blitz bumper

2



To make the cut will first require marking out three points on the bottom of the front fascia, along both sides.

3

These measurements are to be considered a starting point, and additional trimming and/or fine tuning of the cut may be necessary to achieve an ideal fit and gap for the wings. Take time to ensure the cut is marked carefully and remember that is safer to err on the side of cutting lower on the body initially.

4



The cut being marked will be following closely in line with the bend in the front bumper just above the three Viper Wing mounting slots.

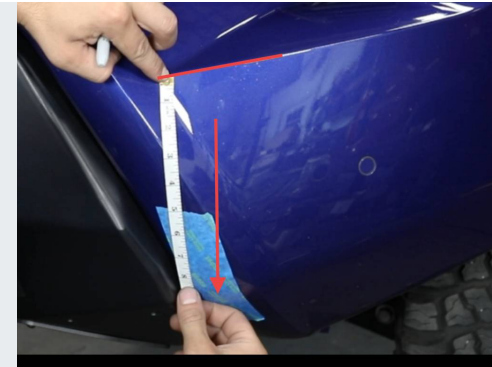


5



For the first point, begin by applying a strip of masking tape along the side of the Blitz bumper on the fascia.

6



Using a flexible tape measure, hold the end flush with the sharp edge of the body line, right at the front point where it creates a shallow internal corner.

7



8



Measure down, holding the tape vertically across the fascia, and make a mark on the tape at 8-3/4".



9



After marking, verify that the measurement is correct.

10



The second point will be measured starting from the convergent point of the fender-to-fascia seam, and the bottom edge of the headlight.

11



Once again using the flexible tape measure, allowing it fall vertically and follow the contour of the fascia, start from the point called out in the previous step and make a mark on the masking tape at 13.25".

12



Make the mark right at the edge of the fender flare.



13



Double check this measurement once more after making a clear mark.

14



The third point will be measured from the intersection point of the fascia-fender seam and the outer profile of the fender flare where it crosses that sea, as indicated in the image.

15



Apply another strip of masking tape along the fender flare tangent to the wheel opening, directly below the measurement starting point.

16



Again, allowing the flexible tape measure to fall vertically and hug the contour of the fender flare.



17



Make a clear mark on the tape at 11.25"

18



At this point you should have something like these three points marked out on both sides of the fascia.

19

The next step is to "connect the dots." A laser level that can lock the beam will help with the step.

20



A line represented by the flexible tape measure will need to be created between the first and second points.



Install Doc - VT4FB-VIP 24+ Tacoma Viper Wings

Feedback?



21



Using the edge of fine-line to follow the projection of the laser to create a cut-line, connect the two points.

22



As a point of reference: the bottom profile of the parking sensor to the edge of the tape being used to indicate the cut-line should measure around 1-1/4" to 1-3/8" as shown in the image.

23



In similar fashion, use the fine-line tape to connect the second and third points to create a straight line across the remaining unmarked portion of the fascia, as well as the fender flare.

24



Before making the cut: it is advised to apply additional layers of tape to the fascia above the area being cut to help prevent and accidental damage.



25



Additionally, be sure to verify that any wiring or other critical components are moved away from the backside of the cut or are well protected.

26



To make the cut you may use a small reciprocating saw or a cut-off tool with an abrasive disc. Always wear safety glasses and protective equipment when performing these operations.

27



Carefully begin to make the cut.

28



Take caution to avoid cutting the side of the Blitz bumper when to are closer to the center of the fascia.

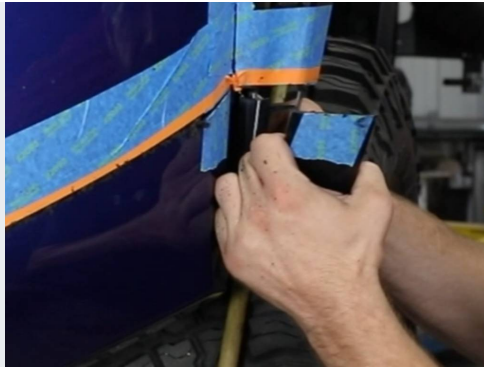


Install Doc - VT4FB-VIP 24+ Tacoma Viper Wings

Feedback?



29



The marked portion of the fender flare may need to be entirely cut and removed before the portion of the fascia behind is accessible enough to cut all the way through.

30



Once the cut is complete, remove the lower section of fascia and discard. Note: sometimes the plastic can slightly melt back together so this may require a slight snap to get it to separate, or the assistance of a utility knife.

31

After test-fitting the wings and completing any tune-up cutting, be sure to deburr and clean up the cut edge before final installation of the Viper Wings.

32



Begin the installation of the Viper Wings.

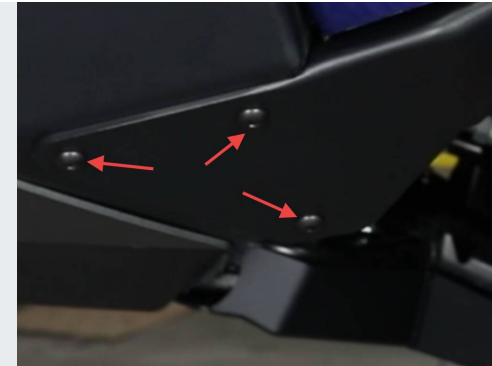


33



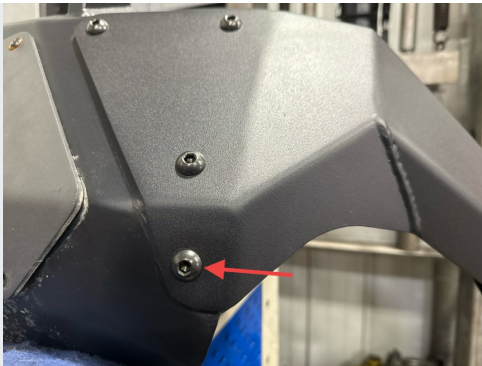
Begin by attaching the wings to the side flange of the bumper using the the holes on the internal flange of the wing with (2) 3/8-16 x 3/4" hex head cap screws, flat washers, and 3/8" flange lock nuts per side. Leave these fasteners slightly loose.

34



Use (3) black 3/8-16 x 3/4" button-head socket cap screws and 3/8" flange lock nuts to mount the front of the wing to the bumper. Leave these slightly loose.

35



Install the remaining black 3/8-16 x 3/4" button-head socket cap screw and flange lock nut in the final mounting hole in the bottom of the bumper.

36



Tighten all wing hardware using a 7/32" hex and 9/16" socket and wrench. Start with the front outside hardware and work around to the inside hex heads. Check the fit of the wing as you go.



Install Doc - VT4FB-VIP 24+ Tacoma Viper Wings

Feedback?



37



Once the wing is tight, install the rubber bumpers into the large hole of the fascia support brackets, and mount the bracket to the wing with (1) 1/4-20 x 3/4" black button-head socket cap screw on each side. Assist the bracket in the slot so that the bumper engages the inside of the fascia, providing gentle outward support.

38



This concludes the installation of your new Victory 4x4 Tacoma Viper Wings!